



FORM TP 2019125

CANDIDATE – PLEASE NOTE!
PRINT your name on the line below and return this booklet with your answer sheet. Failure to do so may result in disqualification.

TEST CODE **01313010**

MAY/JUNE 2019

CARIBBEAN EXAMINATIONS COUNCIL
CARIBBEAN SECONDARY EDUCATION CERTIFICATE®
EXAMINATION

TEXTILES, CLOTHING AND FASHION

Paper 01 – Technical Proficiency

1 hour 30 minutes

07 JUNE 2019 (p.m.)

READ THE FOLLOWING INSTRUCTIONS CAREFULLY.

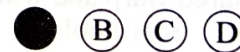
1. This test consists of 60 items. You will have 1 hour and 30 minutes to answer them.
2. In addition to this test booklet, you should have an answer sheet.
3. Each item in this test has four suggested answers lettered (A), (B), (C), (D). Read each item you are about to answer and decide which choice is best.
4. On your answer sheet, find the number which corresponds to your item and shade the space having the same letter as the answer you have chosen. Look at the sample item below.

Sample Item

Which of the following is a filament yarn?

- (A) Silk
- (B) Wool
- (C) Linen
- (D) Cotton

Sample Answer



The BEST answer to this item is “Silk”, so (A) has been shaded.

5. If you want to change your answer, erase it completely before you fill in your new choice.
6. When you are told to begin, turn the page and work as quickly and as carefully as you can. If you cannot answer an item, go on to the next one. You may return to that item later.

DO NOT TURN THIS PAGE UNTIL YOU ARE TOLD TO DO SO.



1. A fibre is a hair-like structure used for

- (A) making yarns for knitting
- (B) stitching lightweight fabric
- (C) threading a loom for weaving
- (D) strengthening the edge of an opening

2. Which of the following tests are used to identify the fibre content of fabrics?

- I. Burning
- II. Chemical
- III. Colour fastness

- (A) I and II only
- (B) I and III only
- (C) II and III only
- (D) I, II and III

3. Cotton clothes that are stored before being thoroughly dried will MOST likely be affected by

- (A) moths
- (B) mildew
- (C) shrinkage
- (D) stretching

4. Which of the following fabrics is made from a strong hard-wearing twill weave with coloured warp and white weft yarns?

- (A) Voile
- (B) Jersey
- (C) Denim
- (D) Gingham

5.

Which of the following fibres when scorched smells like burning hair and smoulders on contact with a flame?

- (A) Wool
- (B) Linen
- (C) Nylon
- (D) Polyester

6.

Cotton and linen are comfortable to wear in warm weather because they are both

- (A) elastic
- (B) durable
- (C) resilient
- (D) absorbent

7.

The fibres that run parallel to the selvedge on a fabric are called

- (A) bias
- (B) wale
- (C) weft
- (D) warp

8.

Which of the following fibres, when viewed under the microscope, appears to have nodes similar to joints on a bamboo plant?

- (A) Silk
- (B) Flax
- (C) Wool
- (D) Cotton

9.

The BEST method of caring for a polyester knit blouse after each wearing is to

- (A) fold it and place it over a chair
- (B) hang it by the neckline on a hook
- (C) place it on a padded hanger to air
- (D) fold it neatly and place it in a drawer

259

A002



10. Which of the following fabric qualities are MOST suitable for an auto-mechanic's uniform?

- (A) Crease resistant and water repellent
- (B) Lightweight and water resistant
- (C) Non-flammable and elastic
- (D) Soil-repellent and durable

11. Which of the following techniques would be MOST suitable for concealing a small hole on the front of a floral cotton blouse?

- (A) Beading
- (B) Appliqué
- (C) Tie-dyeing
- (D) Silk-screen printing

12. A mordant is used in fabric decoration to

- (A) apply wax to the fabric
- (B) fix the dye to the fabric
- (C) spread dye into the fabric
- (D) bleach out areas on the fabric

13. A student created a new colour by mixing red and yellow. In which of the following categories should this new colour be placed?

- (A) Neutral
- (B) Primary
- (C) Secondary
- (D) Complementary

Item 14 refers to the following pattern.



14. Which of the following techniques can be used to produce the pattern shown above?

- I. Batiking
- II. Tie-dyeing
- III. Printing

- (A) I and II only
- (B) I and III only
- (C) II and III only
- (D) I, II and III

15. Which of the following fabrics is MOST suitable for making sleepwear for children who live in the Caribbean?

- (A) Nylon tricot
- (B) Wool flannel
- (C) Polyester faille
- (D) Cotton seersucker

16. Chewing gum may be removed from a spot on a cotton dress by

- (A) soaking the spot in bleach
- (B) soaking the spot in detergent and water
- (C) freezing the spot with ice and peeling the gum off
- (D) using carbon tetrachloride on the spot and scraping the gum off

17. Which of the following are NOT considered laundry aids?

- (A) Soaps and liquid detergents
- (B) Starches and fabric softeners
- (C) Hydrogen peroxide and laundry blue
- (D) Bicarbonate of soda and potassium nitrate

18. When laundering clothing, soaking is done in order to

- (A) loosen dirt
- (B) remove stains
- (C) reduce soap scum
- (D) prepare fabric for the conditioner

19. Flax is the raw material which produces

- (A) linen
- (B) rayon
- (C) cotton
- (D) polyester

20. Which of the following fibres, when combined with cotton, is MOST suitable for making swimwear?

- (A) Nylon
- (B) Acrylic
- (C) Spandex
- (D) Polyester

21. When choosing fabric for persons who are tall and thin, it is BEST to avoid

- (A) bright colours
- (B) vertical stripes
- (C) textured finishes
- (D) medium-scale prints

22. A blood stain on a garment of unknown fibre content is BEST removed using

- (A) lime and salt
- (B) chlorine bleach
- (C) methylated spirits
- (D) an enzyme stain remover

23. The purposes of recycling are

- I. to save money
- II. for artistic expression
- III. to save the environment

- (A) I and II only
- (B) I and III only
- (C) II and III only
- (D) I, II and III

24. Which of the following duties is NOT a responsibility of the production manager in a garment factory?

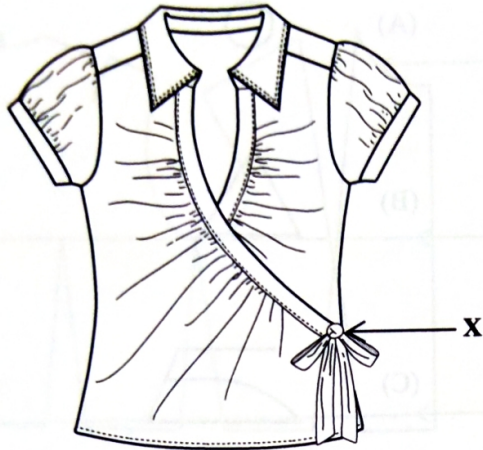
- (A) Scheduling work flow
- (B) Developing patterns
- (C) Controlling quality
- (D) Supervising staff

25. A design of horizontal lines is MOST suitable for a person who is

- (A) short and plump
- (B) tall and plump
- (C) short and slim
- (D) tall and slim



Item 26 refers to the following sketch of a blouse.



26. The point labelled X on the blouse represents

- (A) rhythm
- (B) balance
- (C) emphasis
- (D) proportion

27. Which of the following types of sleeves is MOST suitable for a little girl's dress?

- (A) Puff
- (B) Raglan
- (C) Kimono
- (D) Leg-o'mutton

28. The term 'fashion' is BEST defined as the

- (A) cut or design of a garment
- (B) specific characteristics of clothing
- (C) style of dress that is popular at a given time
- (D) style of dress that is popular only for a very short period

29. Which of the following statements defines the term 'soft furnishing'?

- (A) A soft item used in garment construction
- (B) A decorative and functional textile product
- (C) A tool used in pattern drafting
- (D) A braid used on cushions

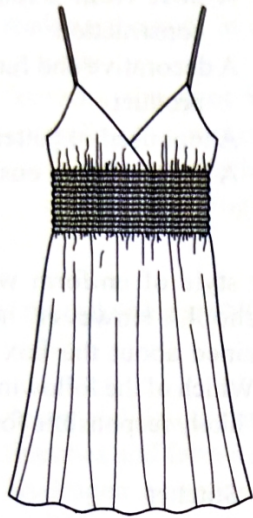
30. A new style of uniform was introduced at a school. However, many students complained about the box pleat coming apart. Which of the following workers was MOST likely responsible for the problem?

- (A) Stitcher
- (B) Designer
- (C) Sample maker
- (D) Pattern maker

31. Which of the following employees is responsible for selecting the colours and fabric for a new line of clothing?

- (A) Designer
- (B) Manager
- (C) Supervisor
- (D) Salesperson

Item 32 refers to the following diagram of a summer dress.




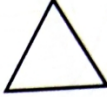
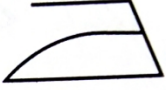
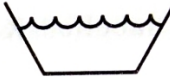
32. The MAIN point of emphasis on the dress is the

- (A) V-neckline
- (B) wrap front
- (C) elasticized waistline
- (D) gathering at the empire line

33. The yarn count of a fabric refers to the

- (A) length of the yarns in the fabric
- (B) weight of the yarns in the fabric
- (C) thickness of the yarns in the fabric
- (D) number of yarns in a measure of the fabric

34. Which of the following care label symbols is used to indicate dry cleaning instructions?

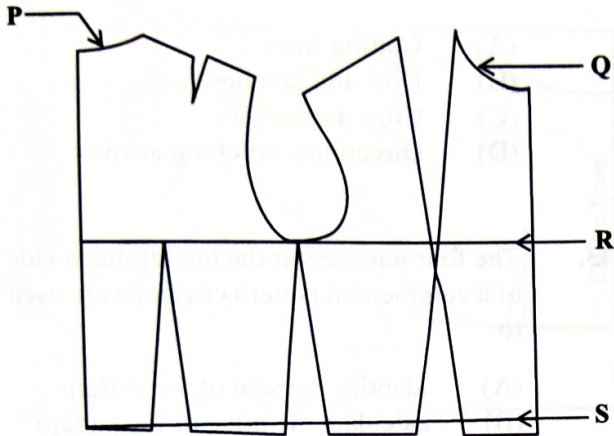
- (A) 
- (B) 
- (C) 
- (D) 

259

A002



Items 35–36 refer to the following front and back pattern of a bodice block.



35. The line labelled S in the pattern represents the

- (A) bustline
- (B) waistline
- (C) front neckline
- (D) back neckline

36. The line labelled P in the pattern represents the

- (A) back neckline
- (B) front neckline
- (C) right armhole
- (D) left armhole

37. Which of the following skills are MOST important for a tailor in a small garment factory?

- (A) Research and development
- (B) Textile testing and chemistry
- (C) Designing and pattern making
- (D) Advertising and window dressing

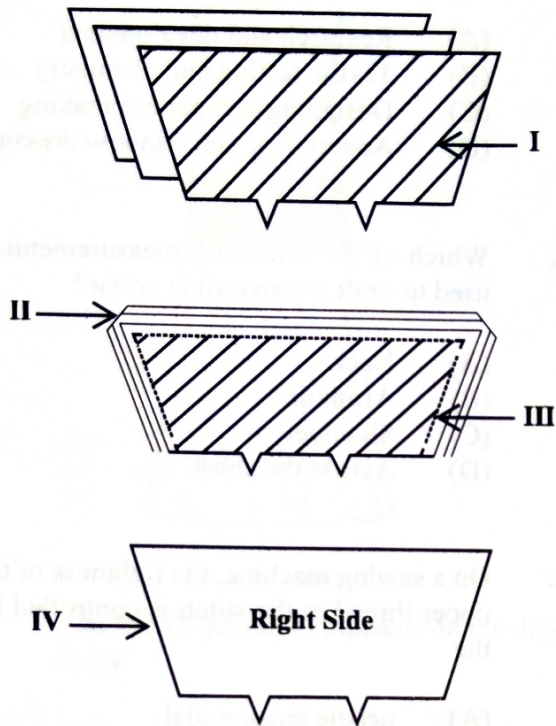
38. Which of the following measurements is used to draft a convertible collar?

- (A) Neck
- (B) Armhole
- (C) Shoulder
- (D) Across the chest

39. On a sewing machine, the tightness of the upper thread in the stitch is controlled by the

- (A) needle tension dial
- (B) stitch pattern selector
- (C) stitch length regulator
- (D) needle clamp and screw

Items 40–41 refer to the following diagrams of collars.



40. Which of the labelled sections illustrates a completed collar ready for attachment to the garment?

- (A) I
- (B) II
- (C) III
- (D) IV

41. Which of the labelled sections illustrates a method that may be used for eliminating bulk?

- (A) I
- (B) II
- (C) III
- (D) IV

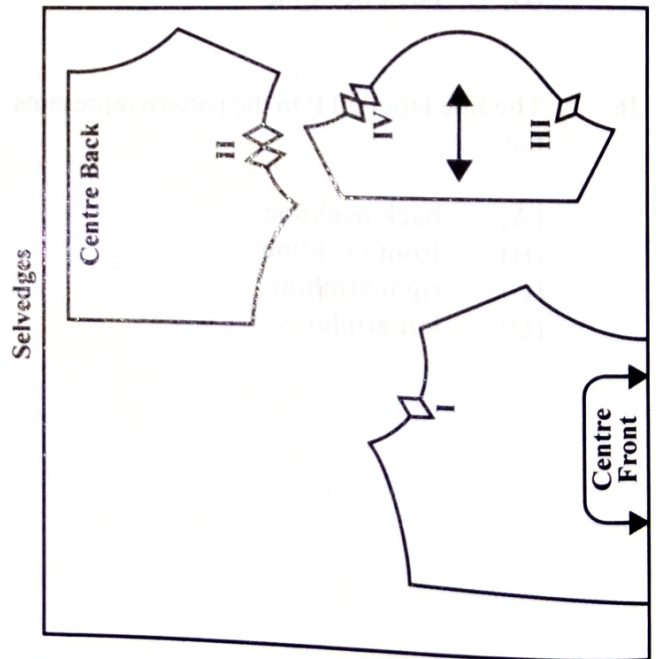
42. Which of the following are guides on a pattern piece for the correct insertion of a sleeve into an armhole?

- (A) Cutting lines
- (B) Dots and notches
- (C) Clips and arrows
- (D) Directional stitching arrows

43. The four numbers at the top left hand side of a commercial pattern envelope are used to

- (A) identify the size of the pattern
- (B) calculate the price of the pattern
- (C) indicate the skill level of the pattern
- (D) locate the pattern having selected it from the catalogue

Item 44 refers to the following diagram of three pattern pieces.

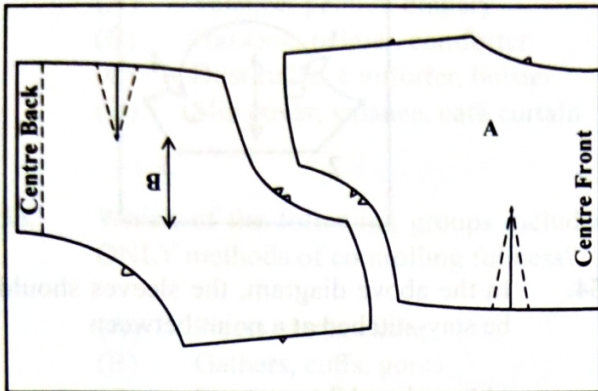


44. Which of the following notches should be matched?

- (A) I and II, III and IV
- (B) I and III, II and IV
- (C) II and IV only
- (D) III and IV only



Item 45 refers to the following diagram of the layout of a bodice with the right side up.



45. The number of fabric piece(s) to be cut from pattern piece B in the layout is

- (A) 1
- (B) 2
- (C) 3
- (D) 4

46. Which of the following qualities are important when selecting fabric for curtains?

- I. Brightly coloured
- II. Resistance to sunlight
- III. Resistance to shrinkage

- (A) I and II only
- (B) I and III only
- (C) II and III only
- (D) I, II and III

47. Which of the following types of stitches should be used for curved areas which require extra handling?

- (A) Stay
- (B) Prick
- (C) Blind
- (D) Directional

48. Which of the following colour combinations would result in a tint?

- (A) Grey and red
- (B) Blue and red
- (C) Red and white
- (D) Red and black

Item 49 refers to the following diagram of a jacket.



49. The line labelled X on the jacket represents a

- (A) tuck
- (B) dart
- (C) seam
- (D) placket

50. The seam on a scooped neck line does not turn over smoothly. Which of the following procedures can be used to correct this problem?

- (A) Grading
- (B) Clipping
- (C) Notching
- (D) Trimming

259

A002

GO ON TO THE NEXT PAGE



Item 51 refers to the following diagram of a garment.

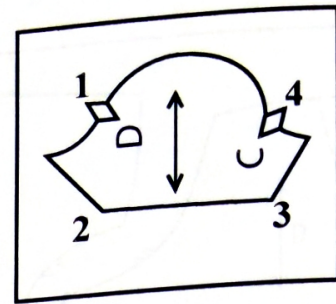


51. Which of the following fastenings would be MOST suitable for use at the opening on the garment?
- (A) Frogs
 - (B) Snap fasteners
 - (C) Hooks and eyes
 - (D) Rouleau loops and buttons

52. Which of the following items is BEST suited for pressing seams flat?
- (A) Seam roll
 - (B) Sleeve board
 - (C) Point presser
 - (D) Wire needle-board

53. What is the correct name for the piece of material which hangs across the top of draperies or curtains?
- (A) Panel
 - (B) Shade
 - (C) Valance
 - (D) Cascade

Item 54 refers to the following diagram of a pattern piece.



54. In the above diagram, the sleeves should be stay-stitched at a point between
- (A) 1 and 2
 - (B) 1 and 4
 - (C) 2 and 3
 - (D) 3 and 4

55. Which of the following types of seams does NOT need neatening?
- (A) Plain
 - (B) Piped
 - (C) French
 - (D) Overlaid

56. Which of the following techniques describes the use of woven interfacing?
- (A) Cut diagonally (6 mm) across any corner of the fabric.
 - (B) Machine baste (1 cm) from the fabric edge.
 - (C) Place the adhesive side on the wrong side of the fabric.
 - (D) Cut on the same grain as the facing and outer fabric.

57. Which of the following groups includes soft furnishings for windows ONLY?
- (A) Valance, pelmet, drapery
 - (B) Hassock, pelmet, comforter
 - (C) Dust ruffle, comforter, bolster
 - (D) Slip cover, valance, café curtain
58. Which of the following groups includes ONLY methods of controlling fullness?
- (A) Pleats, darts, easing
 - (B) Gathers, cuffs, gores
 - (C) Plackets, lapels, seams
 - (D) Gathers, seams, gussets
59. When making a Peter Pan collar, which of the following steps MUST be done before turning the collar over to the right side?
- (A) Baste the edges
 - (B) Slash the corners
 - (C) Clip the curved edges
 - (D) Machine along the neckline
60. A pad which is used in pressing curved seams is called a
- (A) clapper
 - (B) sleeveboard
 - (C) needleboard
 - (D) tailor's ham

END OF TEST

IF YOU FINISH BEFORE TIME IS CALLED, CHECK YOUR WORK ON THIS TEST.